



University of Rijeka
FACULTY OF MARITIME STUDIES

Electronic Chart Display and Information System Training

According to the Ordinance on Vocations and Certificates of Competencies for Seafarers (of the Republic of Croatia):

Generic training is intended for all navigational watch officers and masters who have to be competent in the use of onboard equipment before taking in charge of a navigational watch. The training is designed for officers of navigational responsibilities and is based on IMO 1.27.

(1) Certificate of competency is acquired by a seafarer who completes the prescribed training in accordance with the program of Annex D44.

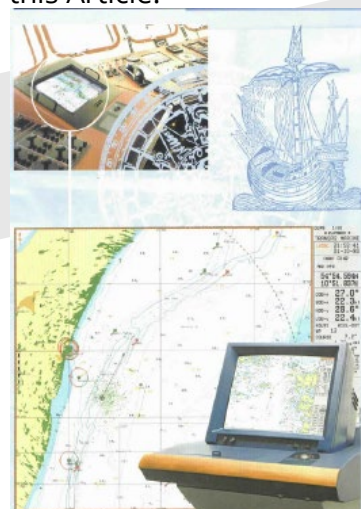
(2) The requirements referred to in paragraph 1 of this Article regarding training shall not be fulfilled by persons who have mastered the program during high school education, which covers all the contents of the program referred to in paragraph 1 of this Article.

(3) The documentary evidence has validity without time limit.

Course duration: 5 working days

Payment:

- credit card or bank transfer
- an invoice issued to a company



The ECDIS trainee should be able to:

- operate the ECDIS equipment, use the navigational functions of ECDIS, select and assess all relevant information and take proper action in the case of a malfunction;
- state the potential errors of displayed data and the usual errors of interpretation; and
- explain why ECDIS should not be relied upon as the sole reliable aid to navigation.

Course content: - Theory and demonstration

- Simulator exercises: Setting up and maintaining display, Operational use of electronic charts, Route planning, Route monitoring, Alarm handling, Manual correction of a ship's position and motion parameters, Records in the ship's log, Chart updating, Debriefing exercise.

Course certificate: A course certificate specifying the training details will be issued by the Faculty of Maritime Studies Rijeka to each participant upon successful completion of the course. The Certificate shall be valid without time limit.

Maritime Training Centre and Life-long Learning

Studentska ulica 2, 51000 Rijeka, Croatia

+385 (0)51 214 587

cip@pfri.uniri.hr / www.pfri.uniri.hr

